



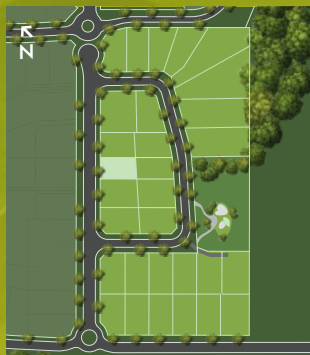
Artist's Impression

House & Land: \$1,382,000*

You will love this well-designed, modern 4 bedroom split-level home with ocean views, clever open plan kitchen & living, separate upstairs rumpus and plenty of storage throughout.



Hillgrove 234



Lot 24	542m ²
Lot Frontage	18m
Floor Area	234m ²

HOUSE & LAND PACKAGE INCLUSIONS:

- Hotondo's Sanctuary Inclusions
- Clever split-level design
- Cladding / render combination with Colorbond roof
- Pictured with Arlo façade (alternate selections available)
- Roomy open plan living, dining and kitchen with huge walk-in pantry and island bench
- 900mm stainless steel appliances and 20mm stone benchtops
- Spacious, separate master suite with double ensuite & walk-in robe
- Powder room to living level
- Full-size laundry with ample storage and outside access
- Rumpus with study nook
- Ducted reverse cycle air-conditioning
- 2,550mm ceiling height
- Continuous hot water system

To secure this home, contact Sceniq's project sales team on 1800 281 820 | sceniq@rpmgrp.com.au

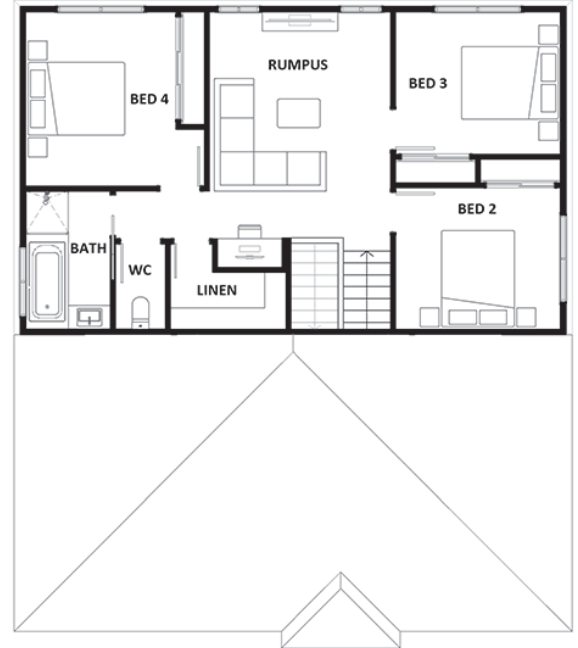
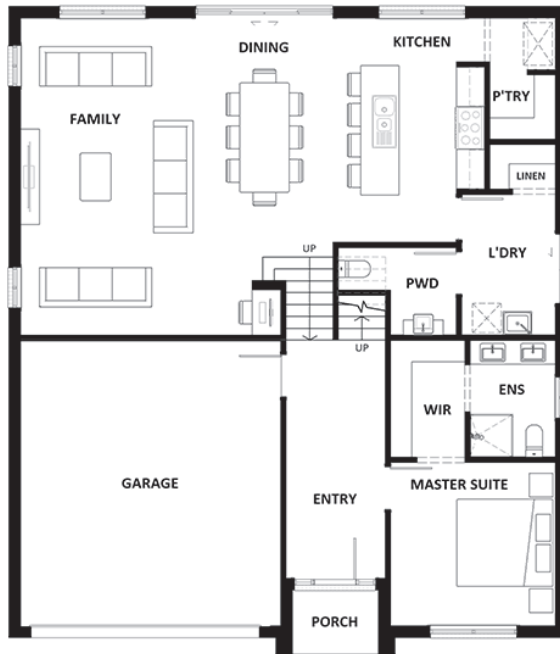
sceniq.com.au



Lot 24 Glider Ridge, Bilambil Heights

4 2.5 2

SCENIQ
BILAMBIL HEIGHTS



Stage I land is due for completion late 2024.

Hillgrove 234

Lower Floors	118.19 m ²
Upper Floor	76.78 m ²
Garage	36.17 m ²
Porch	2.69 m ²
Total Floor Area	233.83 m²

You'll love the ocean views and sea breezes from Lot 24 at Sceniq, perfect for your forever family home.

This home design and facade can be customised to your own needs and architectural style or built on other homesites available in Sceniq (subject to builder availability and land suitability). Lot 24 is available as **land only for \$695,000**.

Contact Louise today on 1800 281 820 to secure this home or to ask about availability and prices for land now selling in Sceniq Bilambil Heights.

skf Development

DISCLAIMER: Home to be built by Hotondo Homes on land separately sold by SKF Development. Interested parties are directed to rely on their own enquiries into the suitability of this builder and home for their own needs. Details and price believed to be correct at time of preparing, subject to builder's disclaimers, product availability and possible site costs. No warranty as to the accuracy of this information can be given either expressly or implied. Purchasers must refer to inclusions and conditions contained in the Contract of Sale and Disclosure for the land, as well as the separate Building Contract. The contents of this brochure have been produced prior to registration of the land. Information including plans, images and artist impressions are intended as a guide only. Floor plan not to scale, land area is subject to survey. Dimensions, specifications, inclusions, landscaping and materials may be changed without notice. Images may include optional features or items not supplied by Hotondo Homes, or available at an additional cost. The developer, its agents and the builder will not be liable for you relying on information in this document. Purchasers should seek their own legal and financial advice.